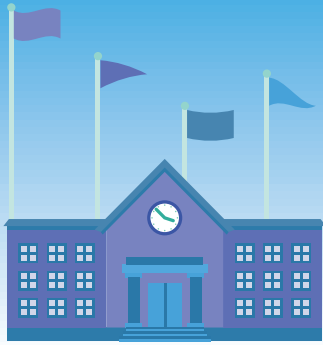


MASTER'S DEGREE PROGRAMS 5.0

a model of effective support for sustainable development of new master's degree programmes



Indicators of institutional environment as the basis to evaluate Masters education in Russian HEIs



75 HEIs
winners of Vladimir Potanin Scholarship Programme



Evidence based research

40 experts
20 interviews
(HEIs administration, stakeholders, development institutions)
5 focus groups
(academic staff, master students)

Questions: Why evaluate MDP? What criteria?

Rationale: Benchmarking, demand, expertise

Timeline: **May 2019**

June
Aprobation Expertise

September
Discussion

05 Business Partners 15%

Integration of HEIs with regional partners to prepare qualified graduates and satisfy regional labour market



01 Management 30%

HEIs' alignment to the principle of MDP administration and institutional management of postgraduate education in general

04 External Support 15%

HEIs staff's efforts to receive funds from Russian and international funding organizations that aim to develop new MDP



EVALUATION CRITERIA
of institutional environment
to ensure development of
MDP in Russian universities

5 Groups
15 Indicators

02 Marketing 20%

Availability of supporting services for development of postgraduate education and promotion of MDP



03 Internal Support 20%

HEIs internal efforts to support development of new MDP through allocating university's funds to special grants and programs for tutors and lecturers

